



Public Involvement

Matthew Burdick, CAPA Director
Citizen Bond Exploratory Committee

Public Involvement Options



Option #1: Review Information

Review information and input gathered through the City's recent surveys, projects and plans.



Option #2: Educate and Inform

Show residents the activities and insights being gained by the Citizen Bond Exploratory Committee.



Option #3: Solicit Input

Solicit additional input to help shape or obtain feedback on committee recommendations.

Discussion



Public Safety Bond Subcommittee

Fire Department Facilities
October 8, 2020



FIRE STATION 2

Located at Alma
School & Warner

Built in 1986

Designed for two
response vehicles

2 units assigned to
station

Most populated
district



RESPONSE STATISTICS

4700

Calls for service in District 2

45

Number of additional seconds added to response time on stacked call

65%

Total number of calls in District 2 covered by a Station 2 unit

803

Automatic Aid responses into District 2 in 2019

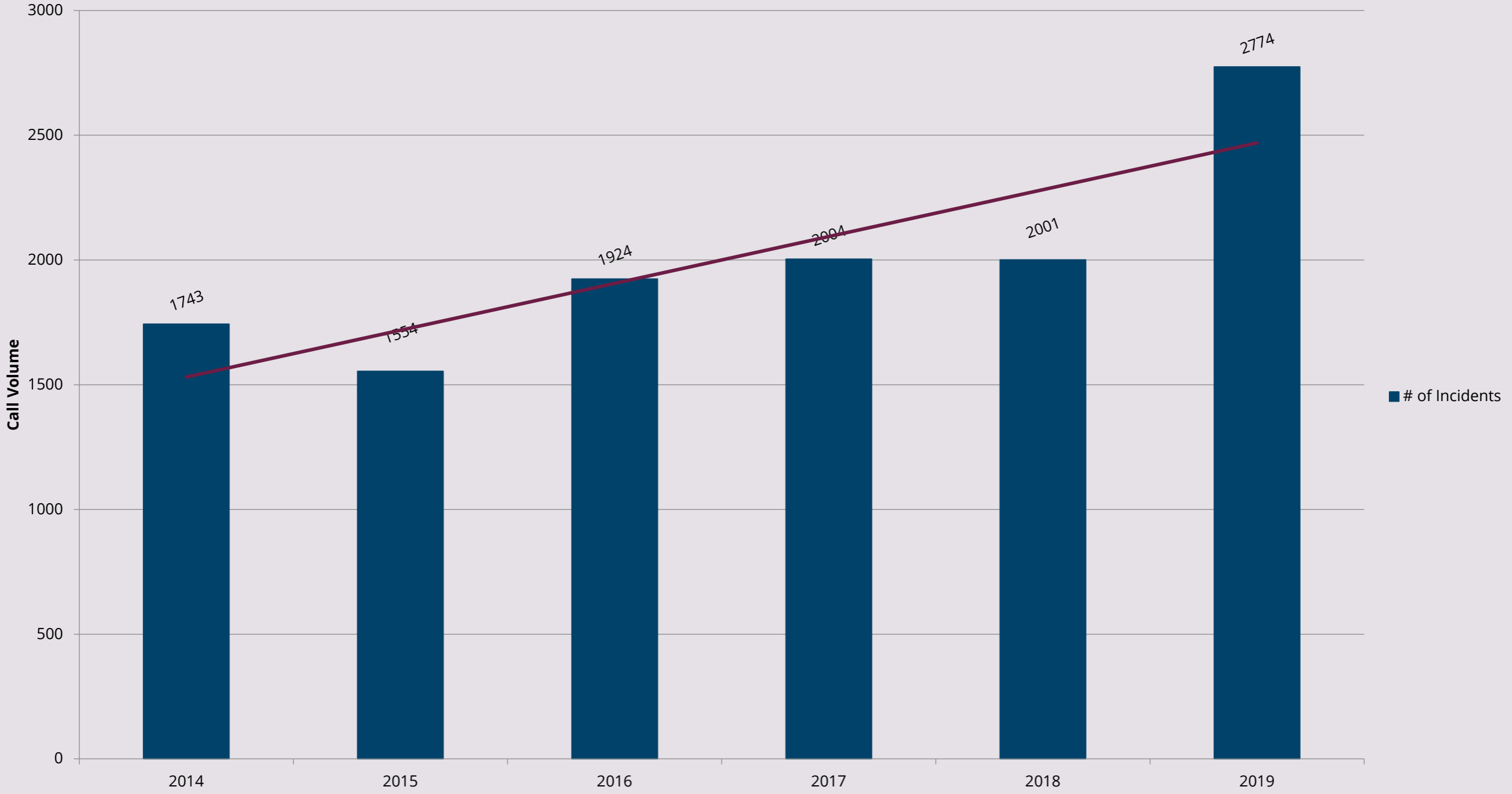
29%

Overall Department stacked call percentage in District 2

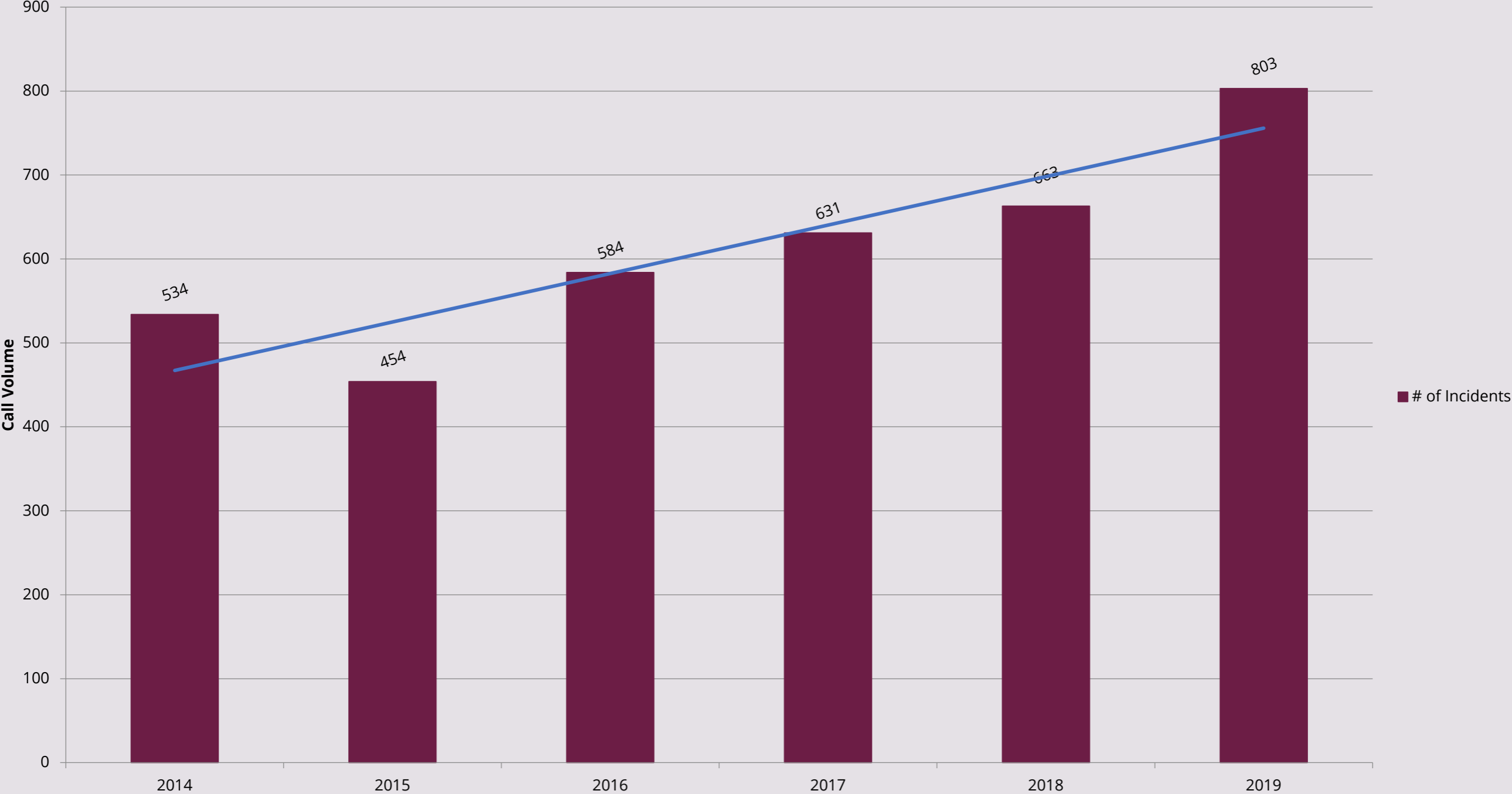
3%

Average annual increase in call volume over five years

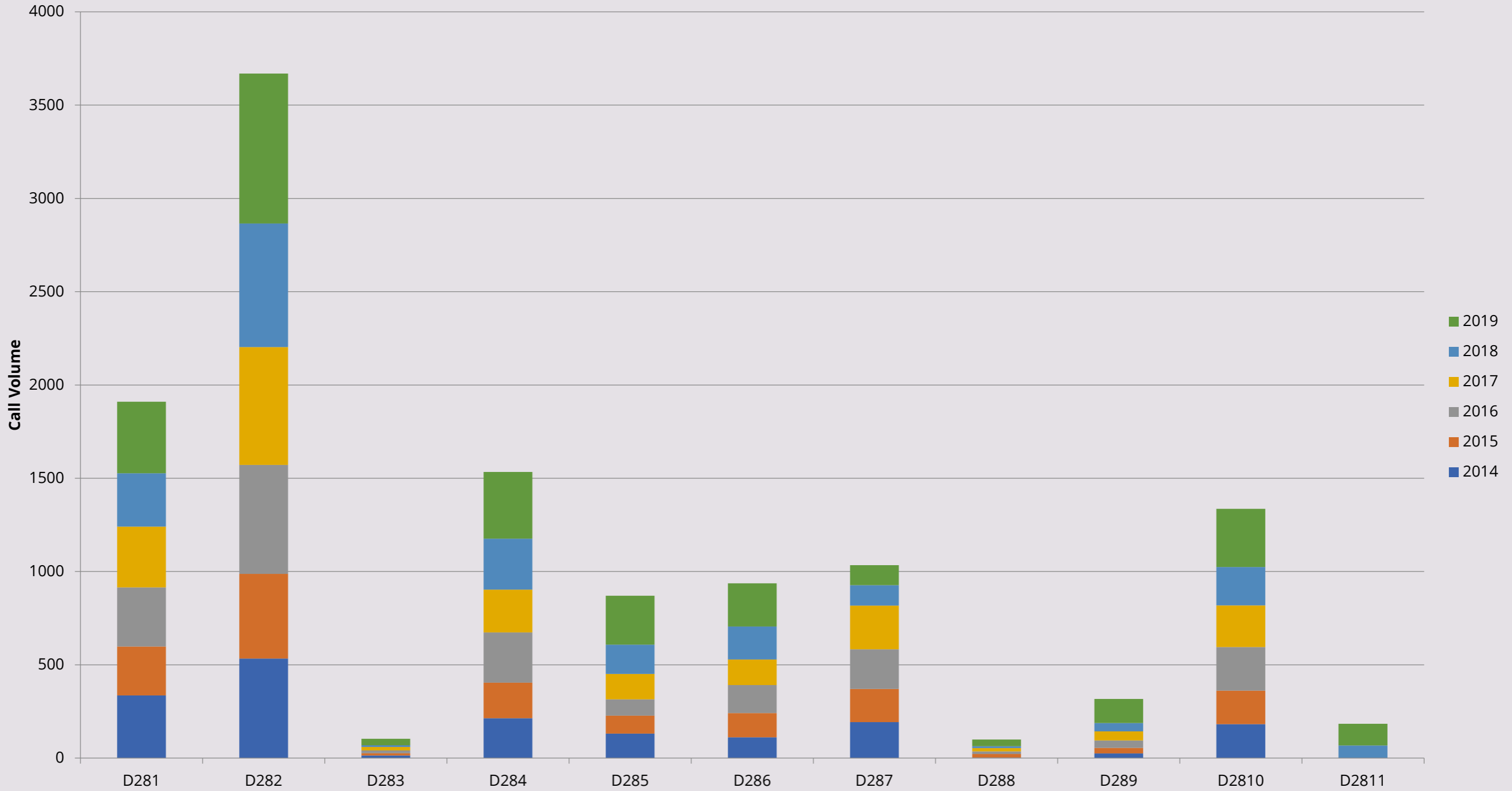
CFD Total Automatic Aid Received by Year



District 2 Automatic Aid Received by Year



Total Aid Received by District 2014-2019



DISTRICT RISK ASSESSMENT

Highest risk for all fire incidents

Highest risk for all medical incidents

Highest risk for low risk Haz-Mat incidents



2018 FACILITY ASSESSMENT RESULTS



SOLUTION

1

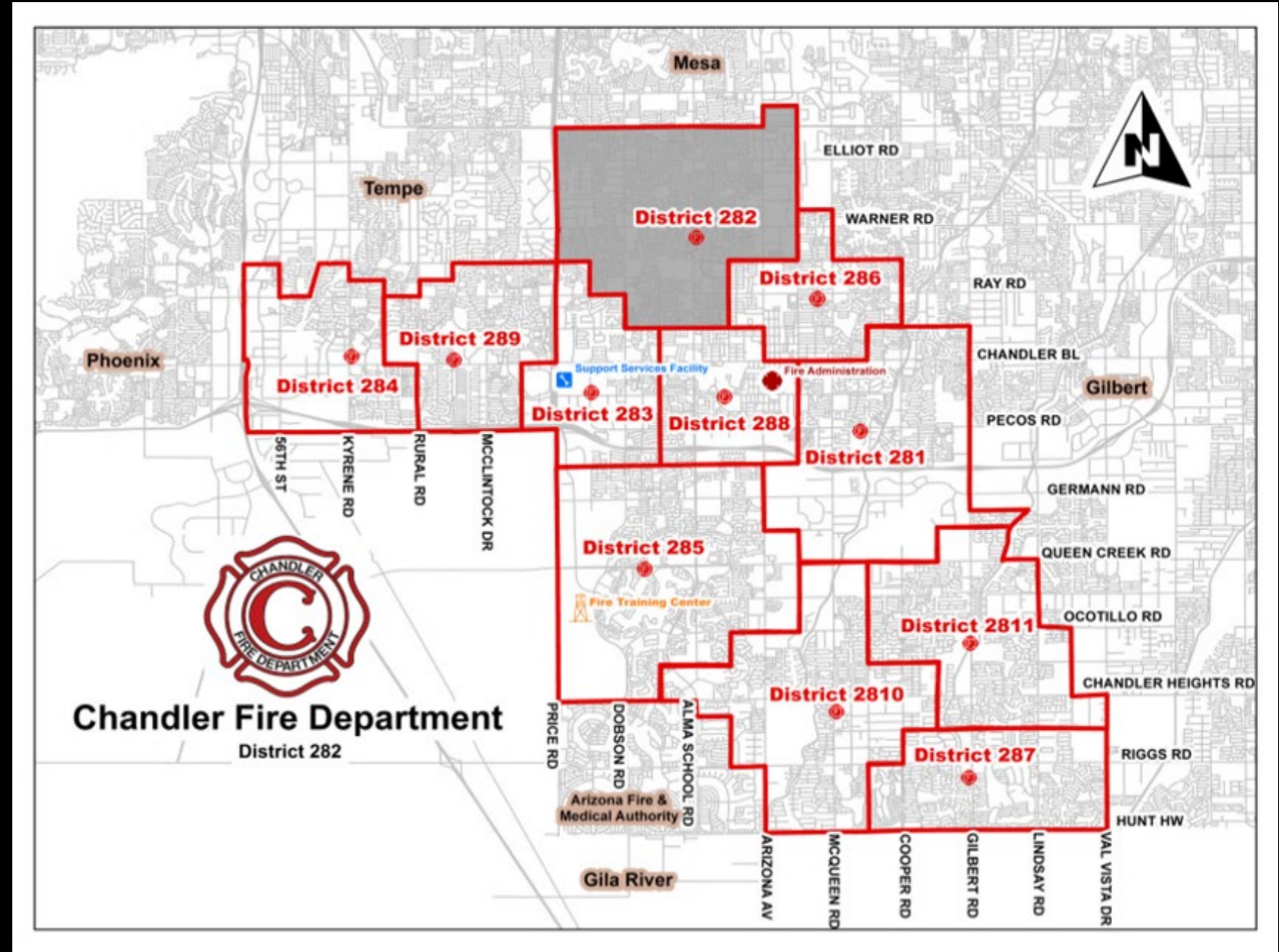
Rebuild Fire Station 2 on existing site

2

Move Engine 288 to Fire Station 2

3

Switch stations for Ladder 288 and Engine 281



FIRE STATION 2

\$6,750,000

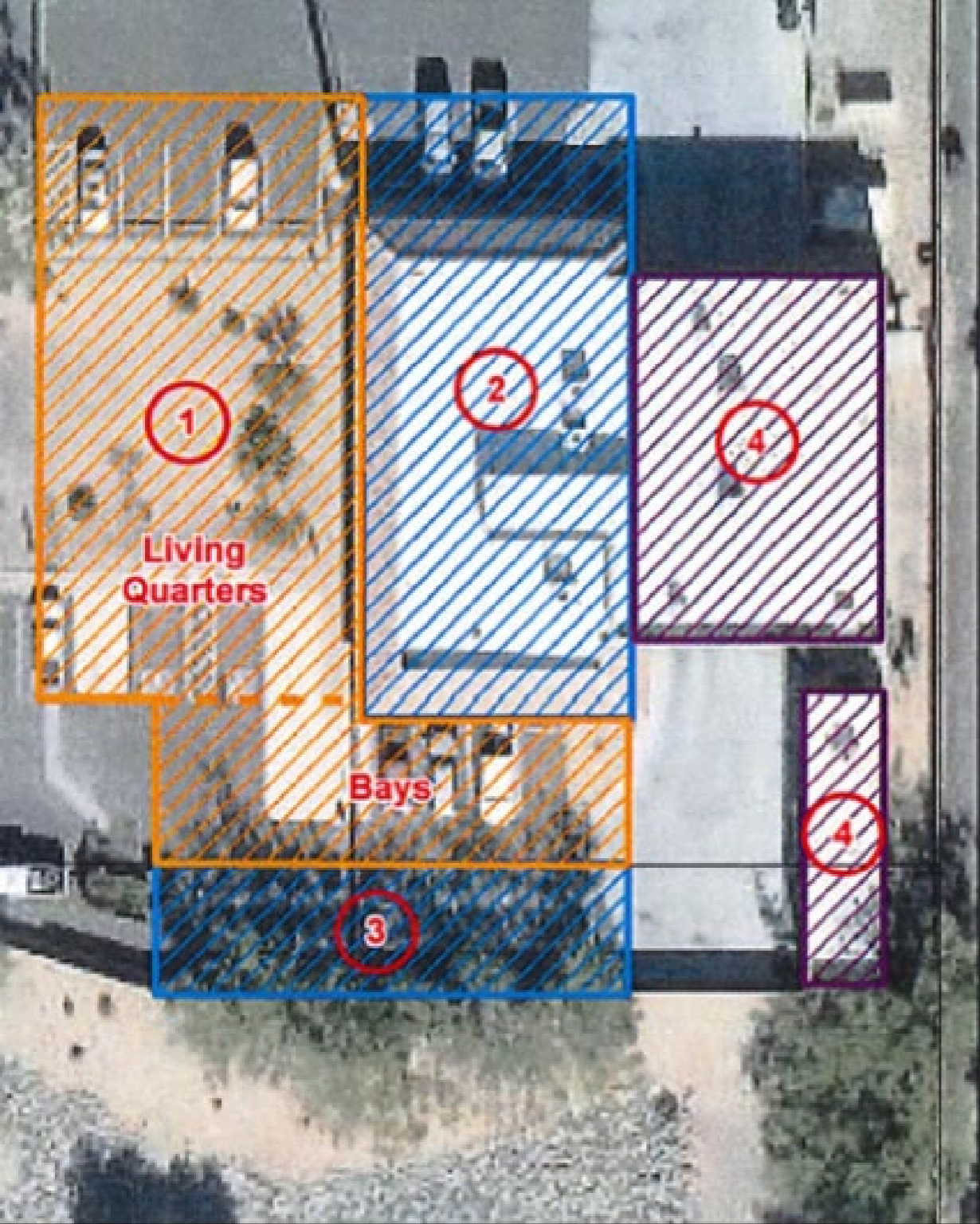
Existing location

Four bays

12 bunk rooms

Phased approach





PHASE 1: Construct new living quarters and two bays

PHASE 2: Remodel current living quarters

PHASE 3: Construct final two bays

PHASE 4: Demo existing bays and workout room

FIRE STATION 4



FIRE STATION 4

Located at Chandler &
Kyrene

Built in 1986

Designed for two
response vehicles

Haz-Mat team

No transition room /
open bunk rooms



2019 FACILITY ASSESSMENT

Highest maintenance need of all 11 stations

Repair costs through 2029 will equal 55% of the value of the building

Major infrastructure needs that may disrupt service



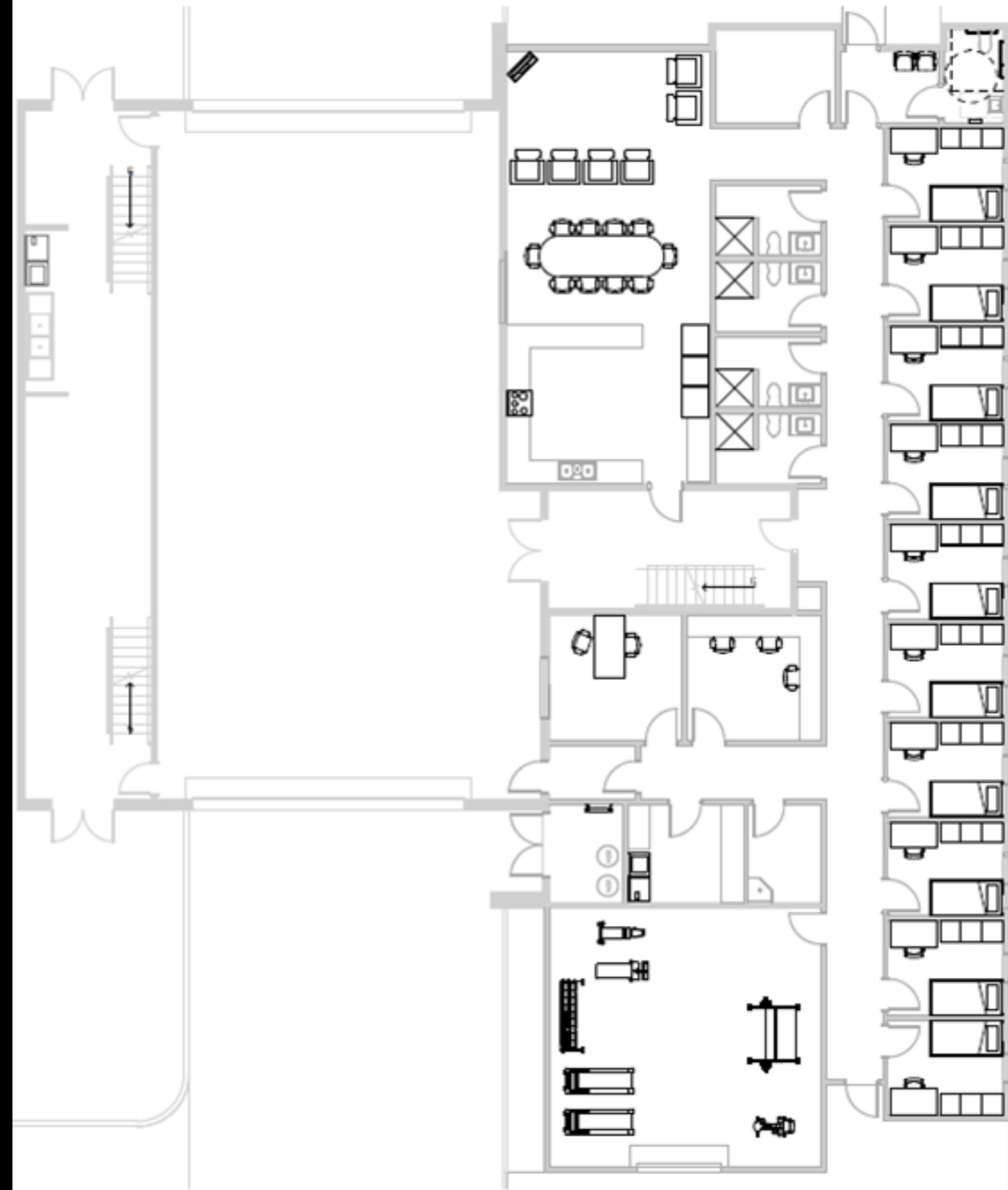
Option #1

Remodel interior to include new bathrooms, closed bunk rooms, and area separation rooms

Small addition at the back of the station

Most building systems remain in place

\$4,250,000





Option #2

Demo Fire Station 4

Build new station that replicates Fire Station 11

3 bays, closed bunks, separation rooms

\$6,500,000