



Public Works & Utilities Subcommittee Kickoff Meeting

Citizen Bond Exploratory Committee | Sept. 16, 2020



Overview

- **How Public Works & Utilities Fits Into the Plan**
- **Public Works & Utilities**
 - Who we Are
 - Utilities Master Plan
- **Transportation Policy**
 - Who we Are
 - Transportation Master Plan
- **Building a Capital Project**
 - Project Delivery
 - Project Financing
 - Overview of Projects

Council Strategic Framework

- **Mobility**

- Transit, roadway, active transportation, and ADA improvements enhance Chandler's multi-modal transportation network

- **Infill and Redevelopment**

- Roadways, active transportation, transit and reliable utility infrastructure serve as a catalyst for infill and redevelopment

- **Neighborhoods**

- Well-maintained public infrastructure promotes neighborhood aesthetics, safety and community vitality



Council Strategic Framework)

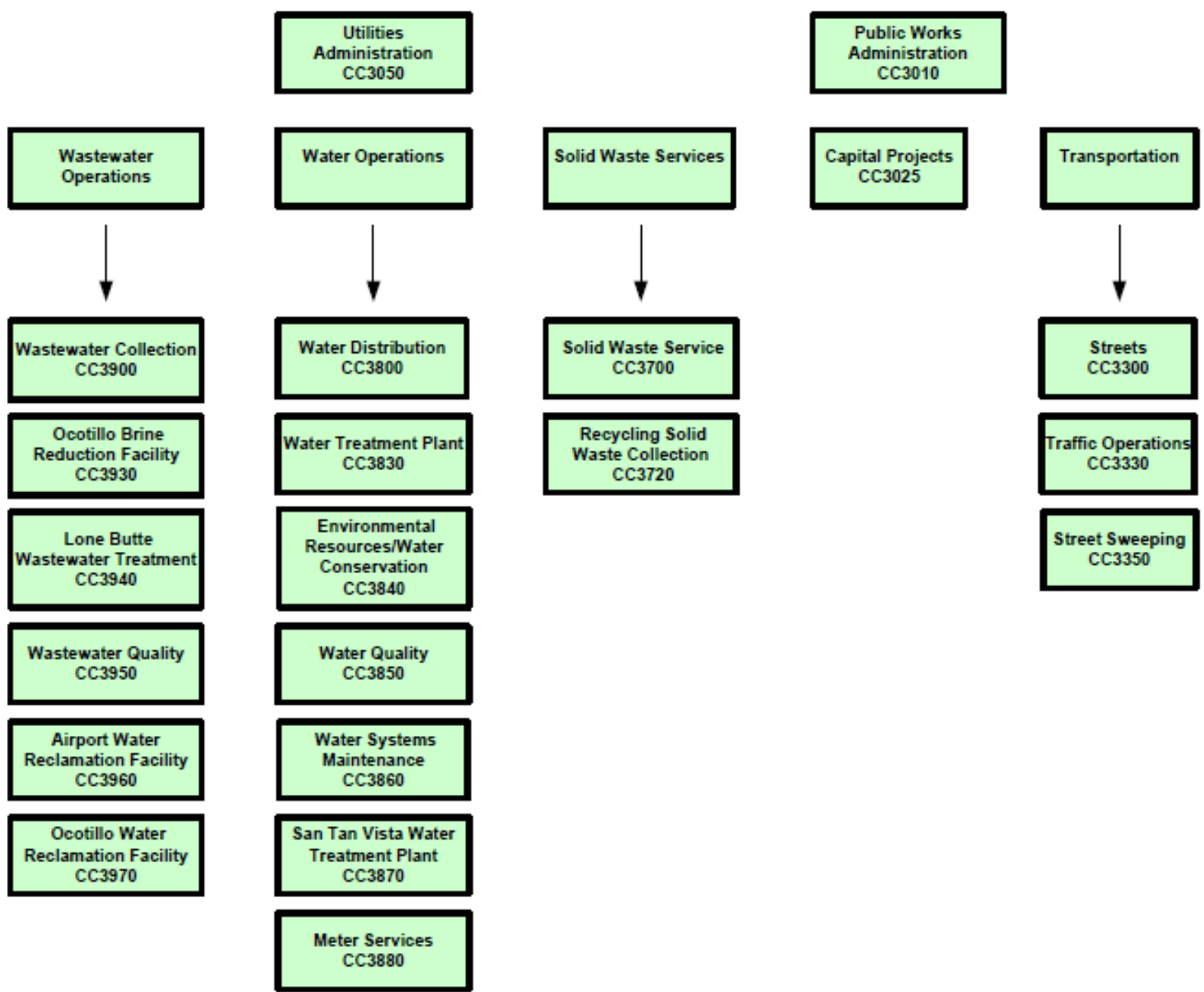
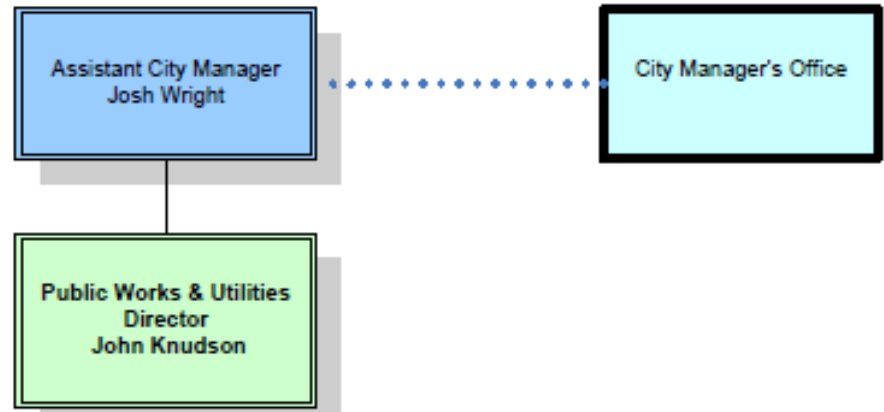
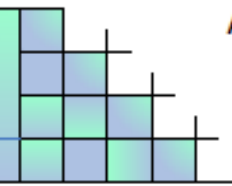
- **Quality of Life**

- Reliable utilities and a convenient, multi-modal transportation network enhances quality of life for Chandler residents

- **Innovation and Technology**

- New transit technologies can increase efficiencies while providing a more convenient service such as autonomous vehicles
- Forward thinking in the use of technology optimizes Utility operations, aids in regulatory compliance and reduces cost





Public Works & Utilities

5 main areas:

- Transportation – Streets/Traffic
- Capital Projects
- Water
- Wastewater /Reclaimed Water
- Solid Waste & Recycling

Public Works & Utilities

Who We Are

- **Streets:**

- **Traffic:**

- **Capital Projects:**

- **Water:**

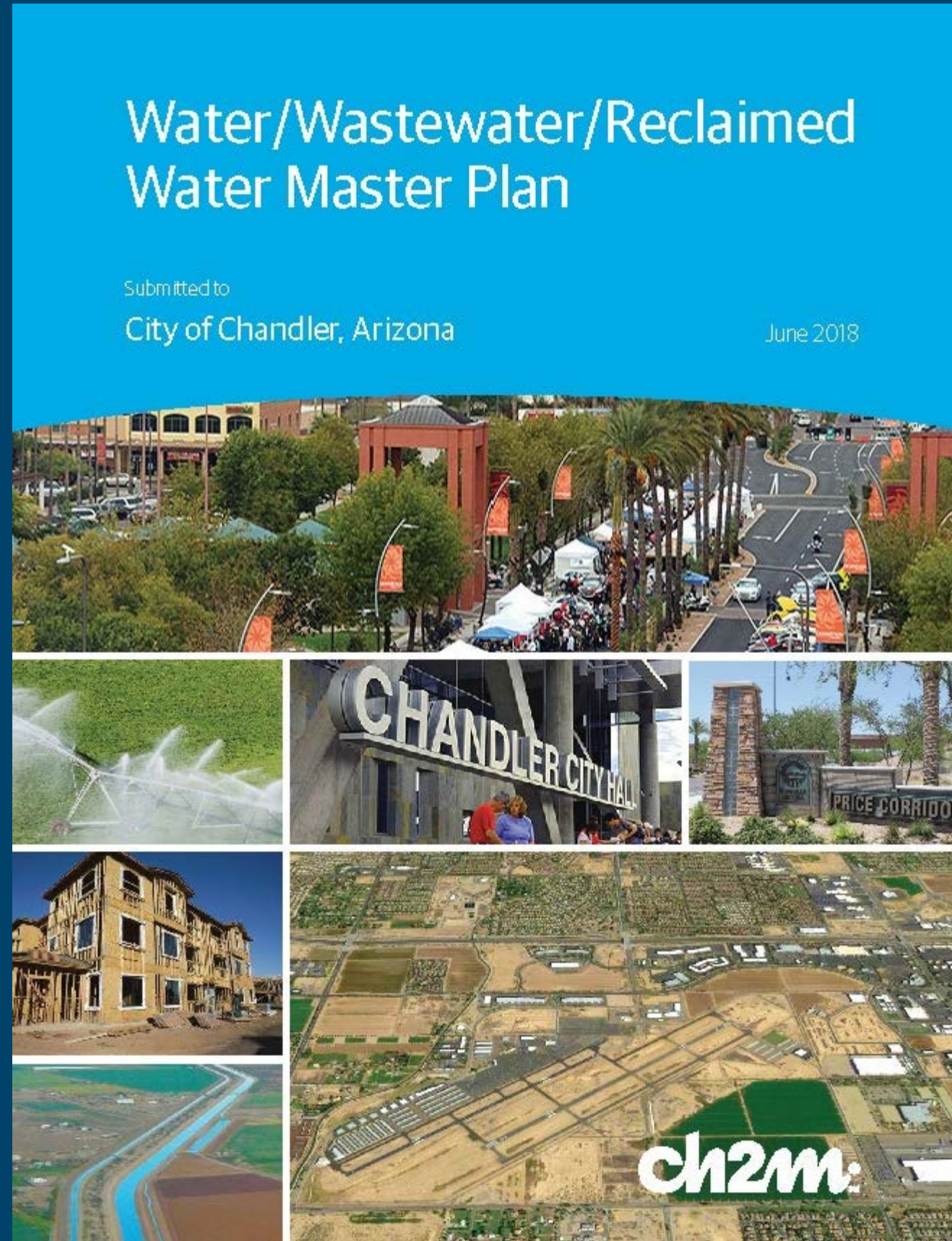
- **Wastewater:**

- **Reclaimed Water:**

- **Solid Waste:**

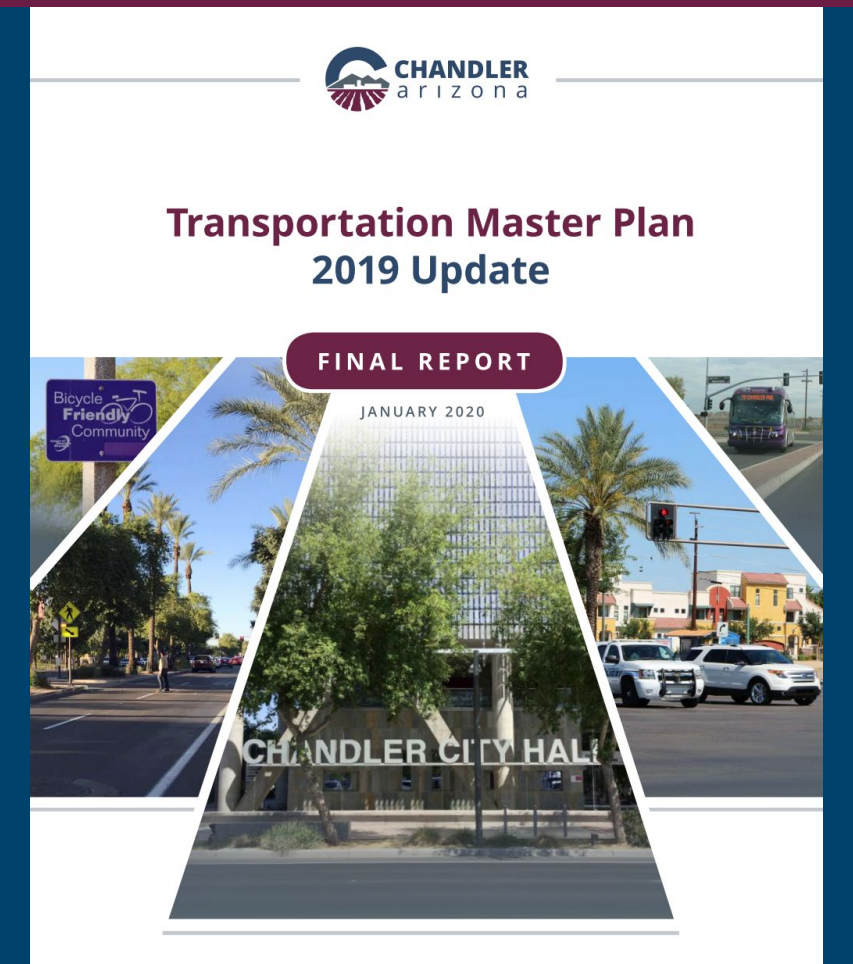
Utilities Master Plan

- **Water:**
- **Wastewater:**
- **Reclaimed Water:**



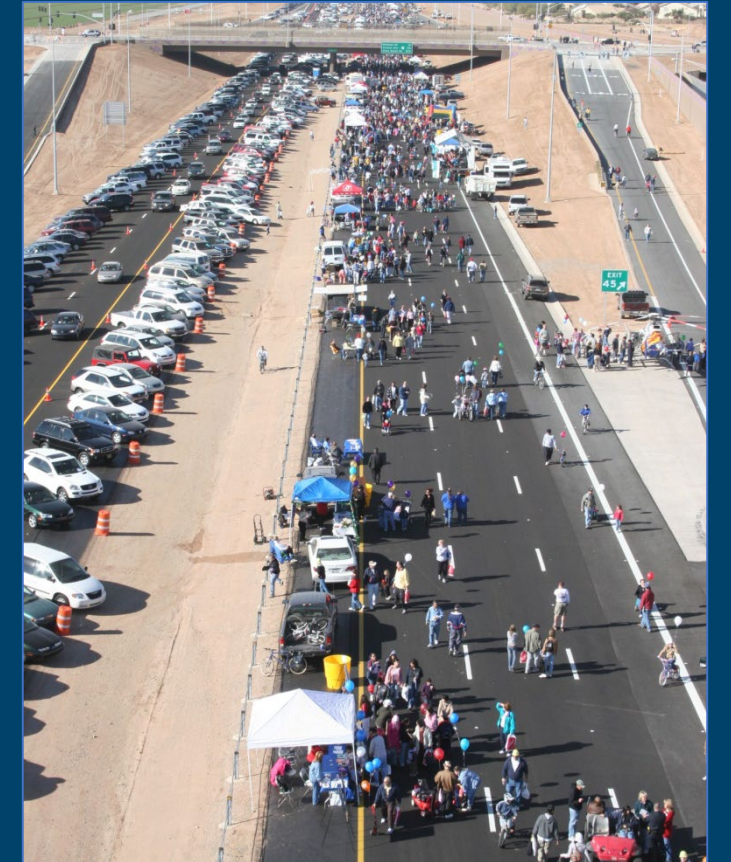


Transportation Policy



Transportation Policy – Who We Are

- Government Relations
- Transportation Planning
- Transportation Programming
- Transit Services
- Active Transportation





Transportation Master Plan



Survey Results - Modes of Travel

- Current mode of travel?



92% Personal Vehicle



3% Bike



2% Transit

- What mode of travel should the City invest in?



44% Transit



35% Auto



10% Bike/Scooter

- Expected primary mode of travel in 20 years?



33% Auto, **28%** Driverless Auto, **11%** Shared Auto



18% Transit



5% Bike

Roadway Element



Bicycle/ Pedestrian Element



Transit Element



Leveraging Technology Element



Building a Capital Project

Project Delivery

- **Project Development**
- **Funding**
- **Design**
- **Property / Right-of-Way Acquisition**
- **Construction**

Funding a Utility Project

- Cash funding from Enterprise Operations Funds
- Bond Funding (Growth Projects)
 - General Obligation (Allowed with Voter Approval)
 - Excise Tax Bond (Current Bonding Source)
- Impact Fees



Funding a Transportation Project

- **Regional Funding**
 - LTAF
 - HURF
 - Proposition 400
 - Proposition 400 Extension
- **Federal Funding**
 - Roadway Funding
 - Active Transportation Funding
 - Transit Funding
- **Bond Funding**
- **Impact Fees**
- **Local General Fund**





Overview of Projects

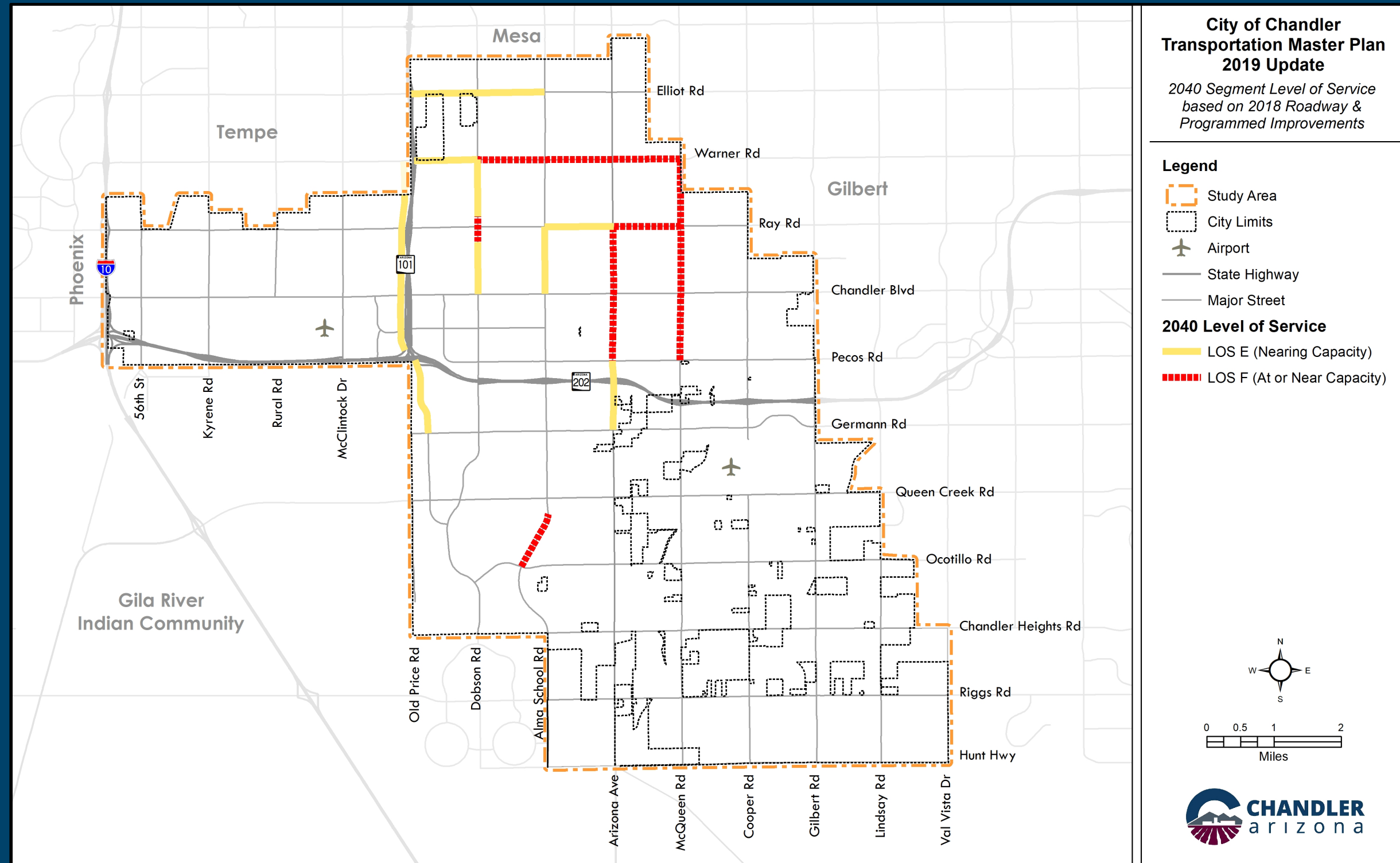


Questions and Comments

Additional/ Backup Slides

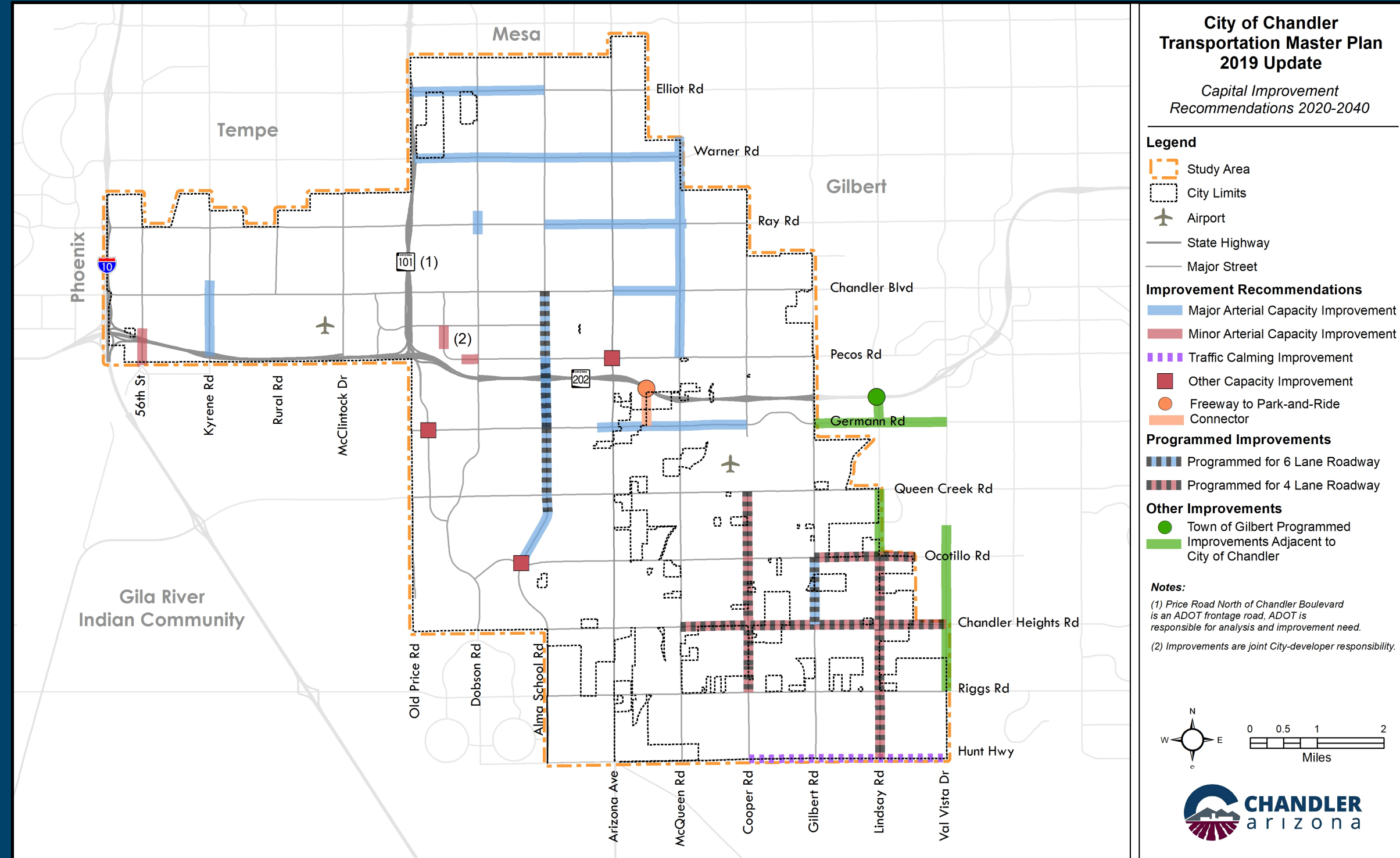
2040 Level of Service Without Improvements

- Capacity constraints primarily north of Loop 202
- Programmed projects accounted for in analysis



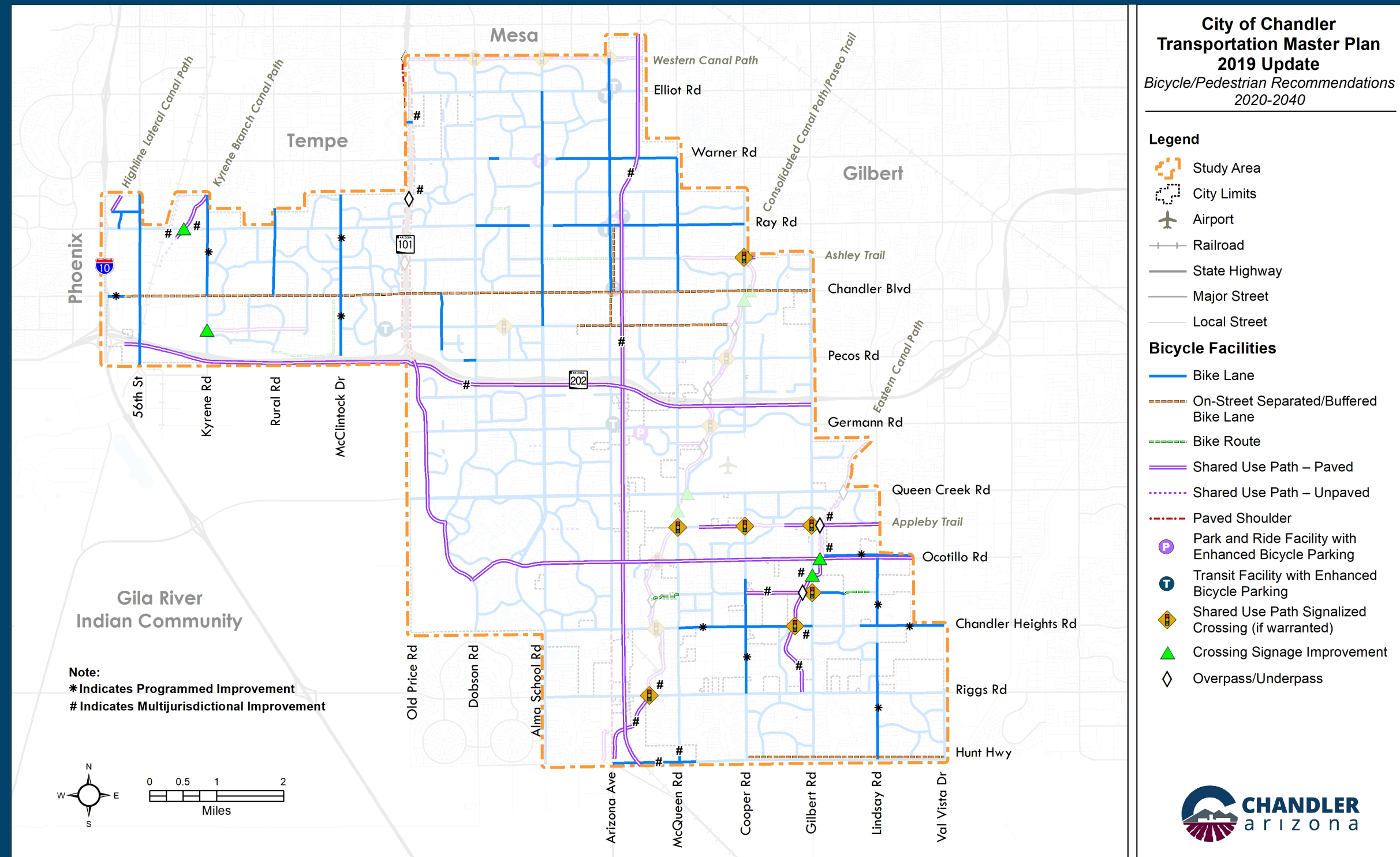
Roadway Recommendations (2020-2040)

- Network of primarily 4-lane and 6-lane roads
- Several 4-lane roads with 6 lanes at intersections north of Loop 202 and east of Loop 101



Bicycle/ Pedestrian Recommendations (2020-2040)

- Bike lanes on all arterials
- Shared use path signalized crossings at all arterial roads (if warranted)
- Add new shared use paths and separated bike lanes
- Interconnected network of on-street and off-street facilities



Leveraging Technology – Mobility Hubs

- Sample mobility hub concept:
- Multiple transit routes
- Seating/shade
- Real-time travel info with interactive kiosks
- Bike parking
- Car-share parking
- Rideshare curb space
- Wayfinding
- Lockers

