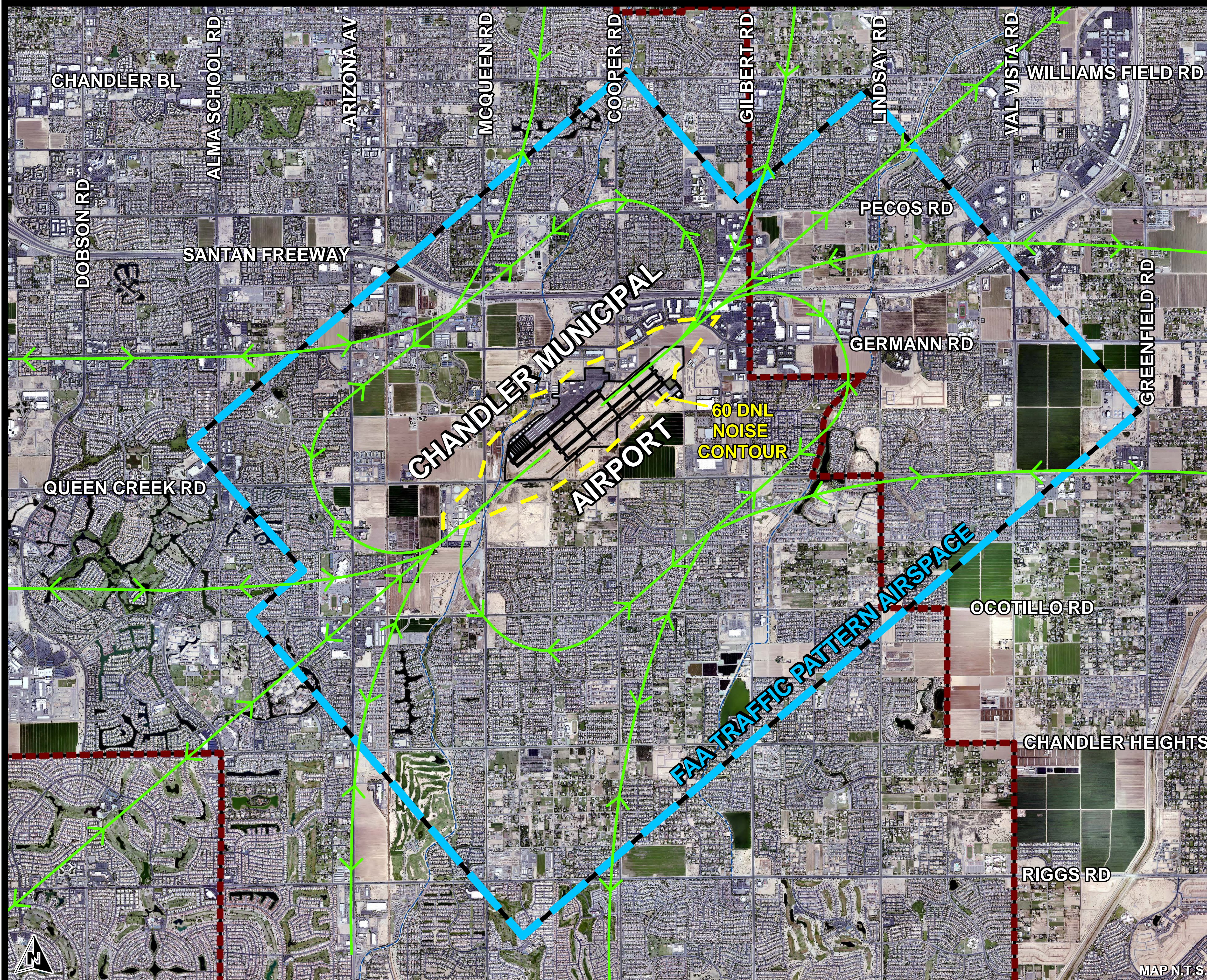


# CHANDLER MUNICIPAL AIRPORT

## TRAFFIC PATTERN AIRSPACE & GENERALIZED FLIGHT TRACKS



### LEGEND

GENERAL FLIGHT TRACK  
TRACKS CAN VARY BY 1/2 MILE  
OR MORE ON EITHER SIDE

FAA TRAFFIC PATTERN AIRSPACE



CITY OF CHANDLER  
PLANNING AREA BOUNDARY



### AIRCRAFT ALTITUDES

EXCEPT WHEN LANDING OR TAKING  
OFF, AIRPORT PILOTS ARE REQUIRED  
TO REMAIN AT OR ABOVE 1,000' WHEN  
FLYING OVER URBAN AREAS.

EXCEPT WHEN LANDING OR TAKING  
OFF, HELICOPTERS MUST MAINTAIN AN  
ALTITUDE THAT ALLOWS FOR A SAFE  
LANDING WITHOUT CAUSING HAZARD  
TO PERSONS OR PROPERTY ON THE  
GROUND. CHANDLER MUNICIPAL  
AIRPORT ENCOURAGES HELICOPTER  
PILOTS TO REMAIN AT OR ABOVE  
600' WHEN FLYING OVER URBAN AREAS.