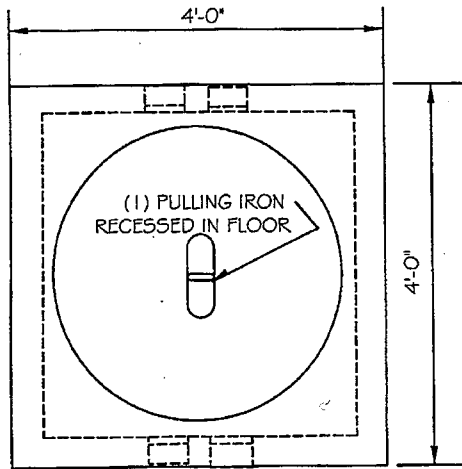


GENERAL INFORMATION

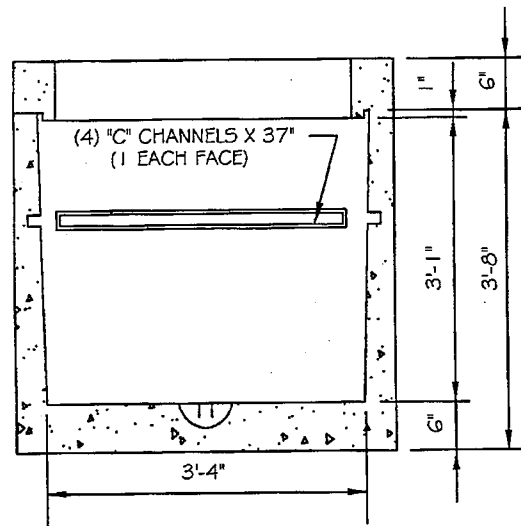
C-100 TO C-113



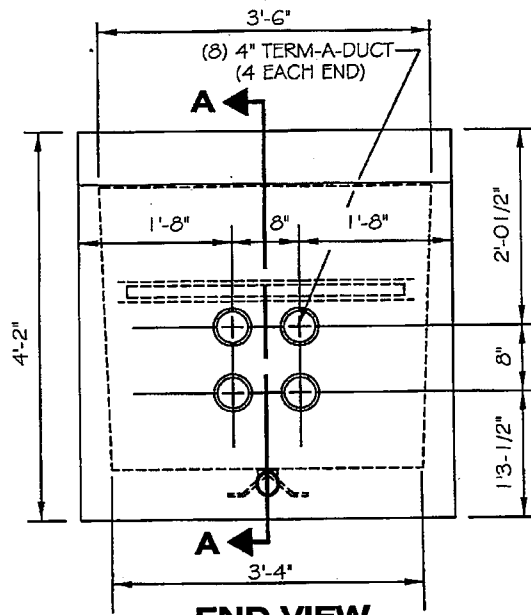
PLAN VIEW

NOTES:

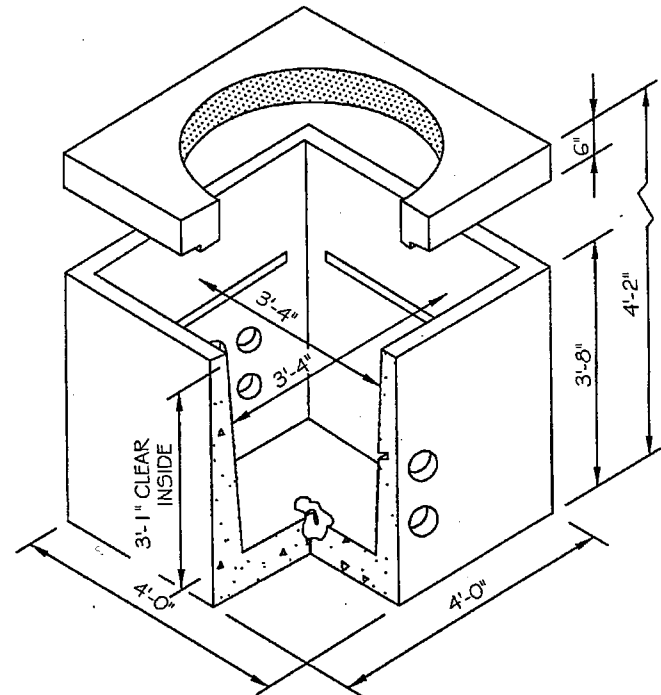
1. VAULT SHALL BE UTILITY VAULT CO. #444-TA OR APPROVED EQUAL.
2. FRAME AND COVER SHALL BE MAG STD DTL 536 - ALTERNATE COVER FOR CURB OPENING CATCH BASINS.
3. COVER SHALL BE FILLED WITH CONCRETE, BROOM FINISHED, AND STAMPED WITH CITY OF CHANDLER LOGO.



SECTION VIEW A-A

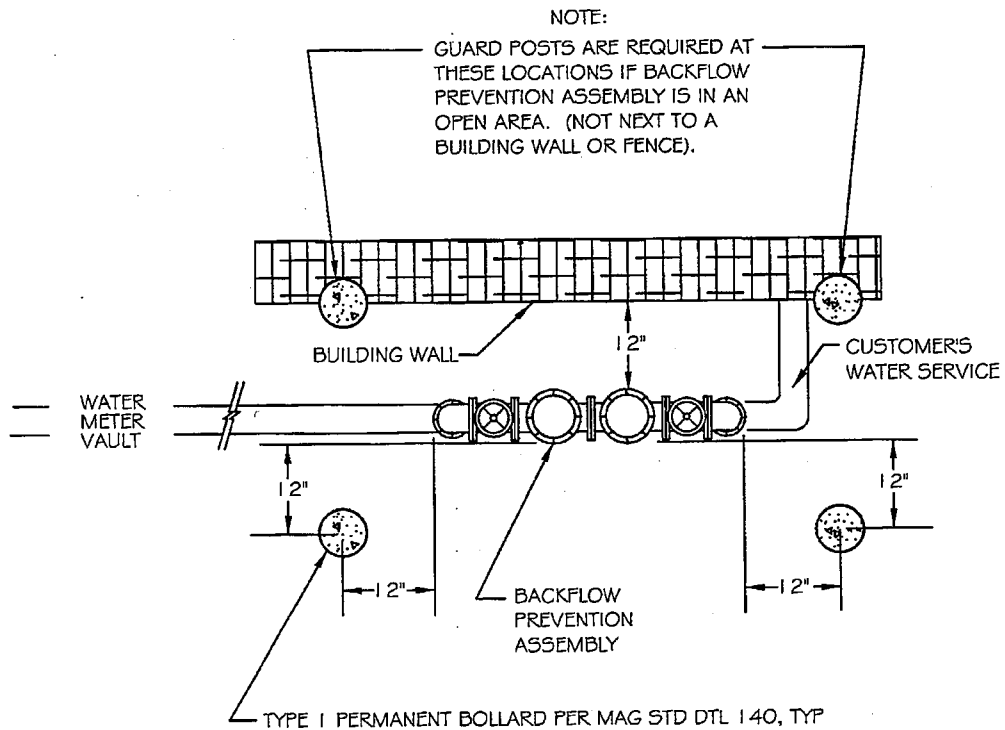


END VIEW




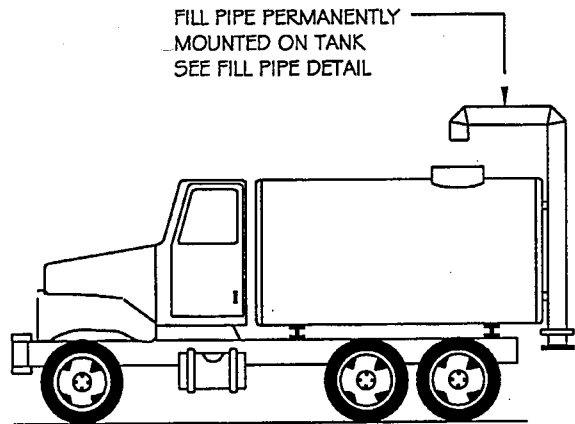
ISOMETRIC VIEW

DETAIL NO. C-103 NTS	 CITY OF CHANDLER STANDARD DETAIL	FIBER OPTIC CABLE SPLICING VAULT	APPROVED:  CITY ENGINEER DATE: 01/08/09	DETAIL NO. C-103 NTS
-----------------------------------	--	---	--	-----------------------------------

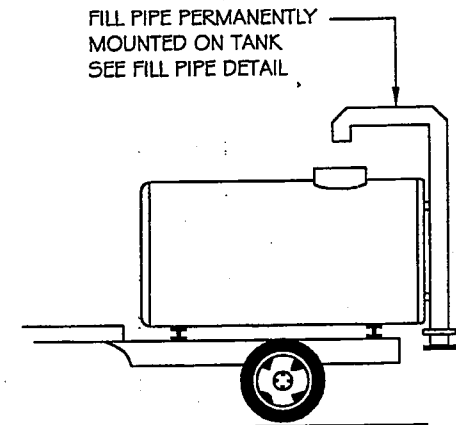


**GUARD POST FOR BACKFLOW
 PREVENTION ASSEMBLY**

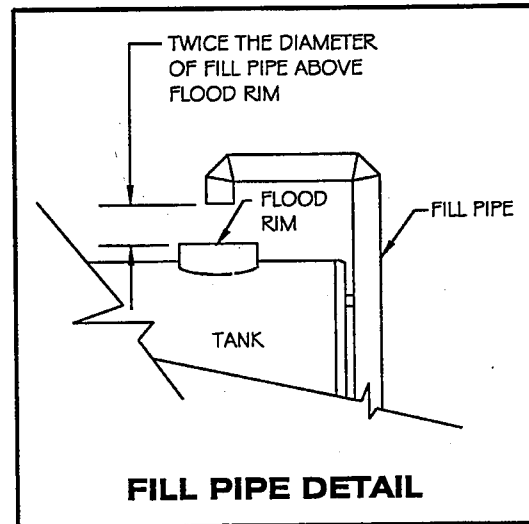
DETAIL NO. C-105 NTS	 CITY OF CHANDLER STANDARD DETAIL	GUARD POST FOR BACKFLOW PREVENTION ASSEMBLIES	APPROVED: <i>John Hyl</i> CITY ENGINEER DATE: <u>01/06/09</u>	DETAIL NO. C-105 NTS
-----------------------------------	--	---	---	-----------------------------------



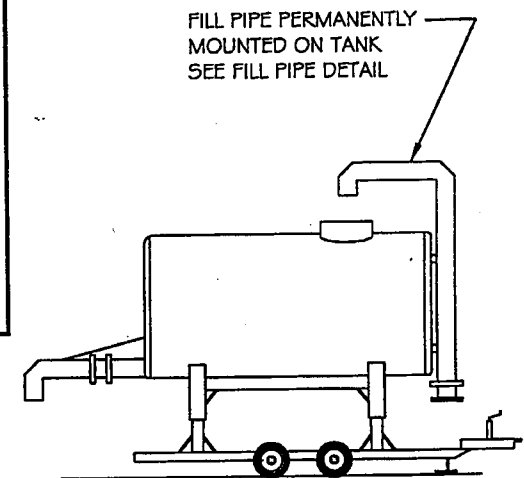
WATER TRUCK



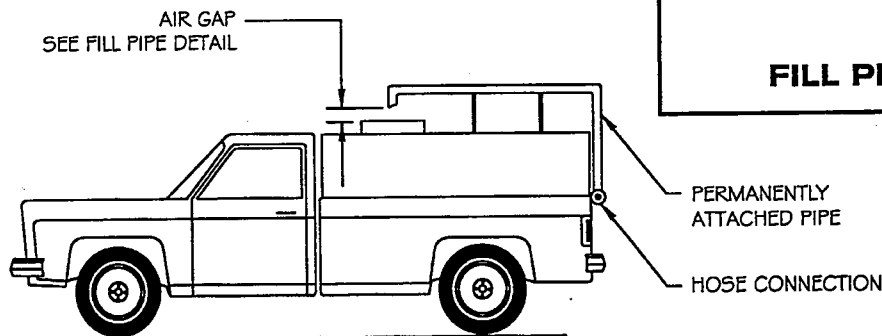
WATER WAGON



FILL PIPE DETAIL



ELEVATED TANK



WATER TRUCK

C-108
REPLACES
95

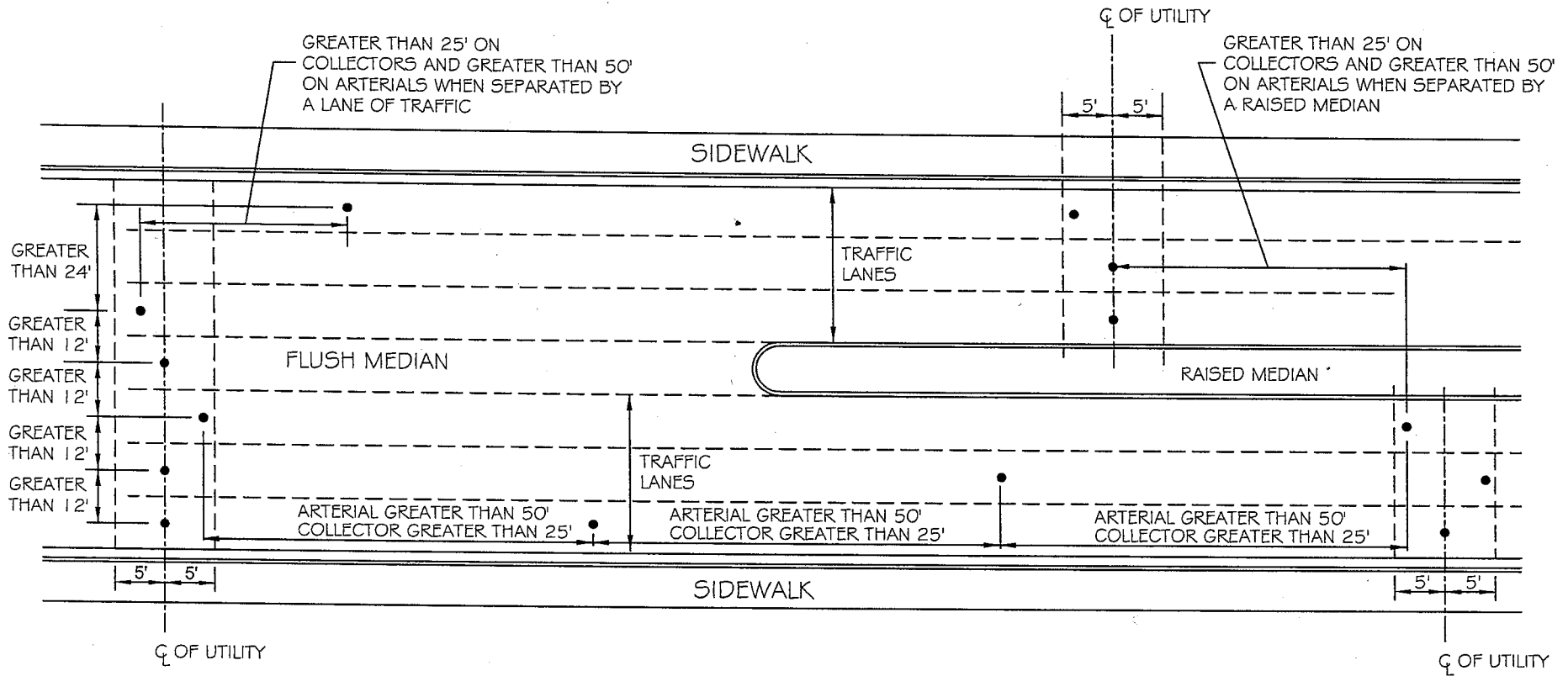


CITY OF
CHANDLER
STANDARD
DETAIL

**AIR GAP BACKFLOW PROTECTION
FOR WATER TANKS**

APPROVED: *Boyer D. Falkner*
CITY ENGINEER
DATE: *11-19-99*

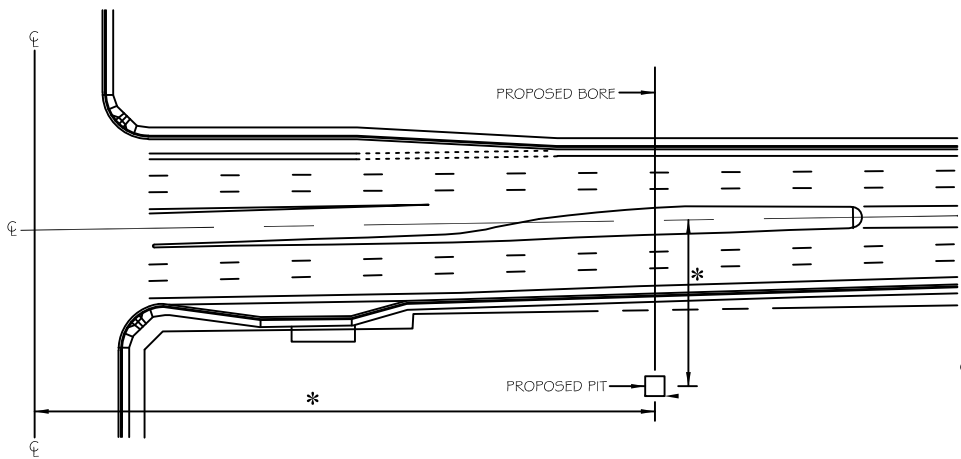
DETAIL NO.
C-108
NTS



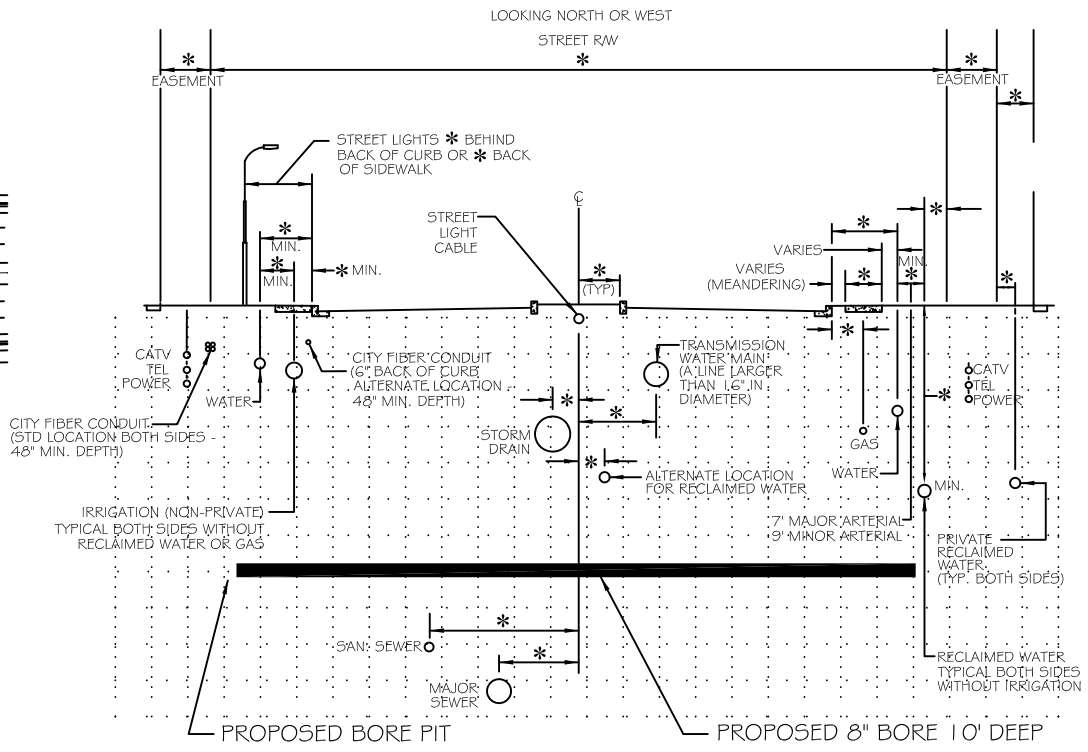
NOTES:

1. REFER TO THE REQUIREMENTS OF ENCROACHMENT PERMITS, STREET CUT PERMITS, AND THE FEE EXEMPTION POLICY.
2. DIMENSIONS FOR POTHOLE SPACING ARE MEASURED TO THE EDGES OF THE POTHOLES.

DETAIL NO. C-111 NTS	 CITY OF CHANDLER STANDARD DETAIL	MINIMUM POTHOLE SPACING FOR PAVEMENT RESTORATION FEE EXEMPTION	APPROVED:  CITY ENGINEER DATE: 01-27-11	DETAIL NO. C-111 NTS
-----------------------------------	---	---	--	-----------------------------------



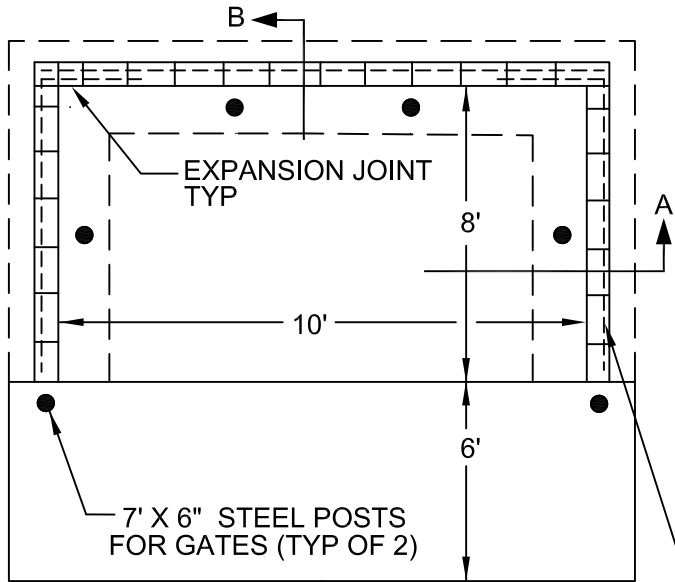
PLAN VIEW
NOT TO SCALE



**BORE PROFILE
TYPICAL SECTION**

NOTES:

1. * PROVIDE PROPOSED LOCATION OF BORE AND ALL UTILITIES WITH VERTICAL & HORIZONTAL DIMENSIONS, AS WELL AS DIMENSIONS OF FACILITIES TO BE CROSSED.
2. 12" BY 12" MAX. SIZE POTHOLES ALLOWED TO VERIFY UNKNOWN UTILITY LOCATION AND TO MONITOR BORES PASSING WITHIN 2' OF EXISTING UTILITIES. CORE DRILLING IS PREFERRED.
3. 1' X 1' AND 2' X 2' POTHOLE PLATES ARE NOT PERMITTED. RESTORE POTHOLES PER MAG STD DTL 212.
4. ALL BORES TO BE SLEEVED IN SCHEDULE 40 PVC OR BETTER.
5. BACKFILL REQUIREMENTS OF PIT SHALL BE PER MAG SECTION 601
6. JURISDICTION SHALL BE NOTIFIED IF OBSTRUCTIONS ARE ENCOUNTERED.
7. GUIDED BORE REQUIRED PER MAG SECTION 608 & CITY SUPPLEMENTAL SPEC.
8. THE CONTRACTOR SHALL MAKE ARRANGEMENTS WITH THE OWNER OF ANY DAMAGED FACILITY FOR ITS REPAIR OR REPLACEMENT. COST OF SUCH REPAIRS SHALL BE IN COMPLIANCE WITH M.A.G. OR SPECIAL AGREEMENTS.
9. REPLACE OR REPAIR ANY LANDSCAPING/SPRINKLER DAMAGED DURING THE COURSE OF THE WORK. PER MAG 107.9.
10. PERMISSION REQUIRED FROM THE CITY PRIOR TO REMOVING OR TRIMMING ANY LANDSCAPING.
11. 24" MIN. CLEARANCE SHALL BE PROVIDED BETWEEN BORE AND ALL EXISTING UTILITIES.



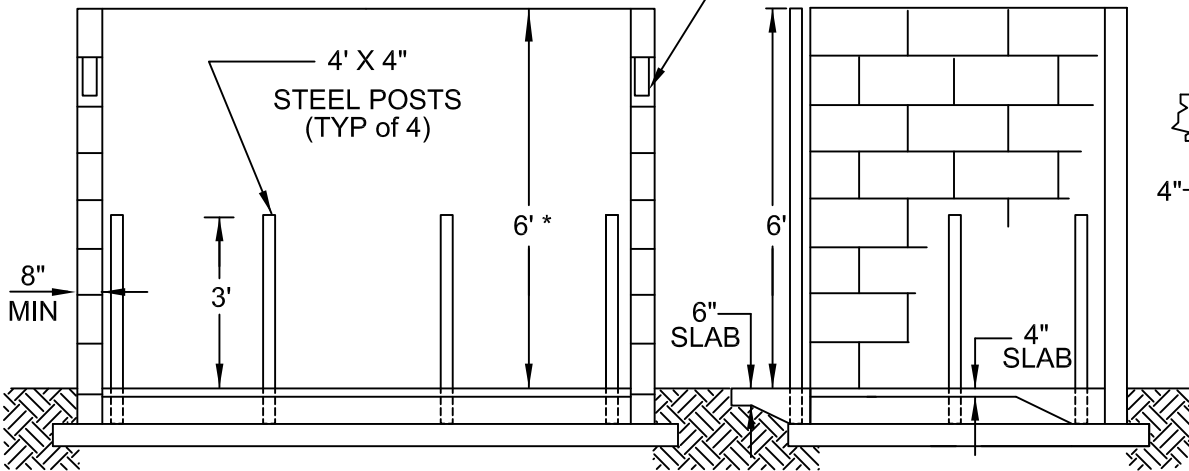
PLAN

PROVIDE BOND BEAM IN SECOND COURSE W/ #4 CONTINUOUS RE-BAR, FULLY GROUTED

NOTES:

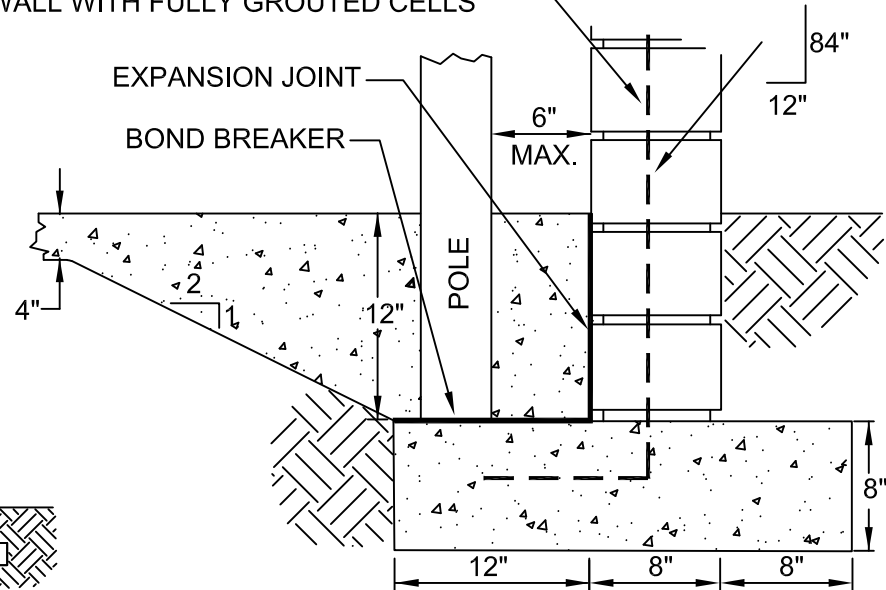
1. INSIDE DIMENSIONS: 10' WIDE, 8' DEEP, AND 6' HIGH. A MIN 5' HIGH WALL / GATE MUST BE PROVIDED FOR RECESSED ENCLOSURES.
2. CONCRETE BASE 4" THICK AT ENCLOSURE AND 6" THICK EXTENDED 6' BEYOND FRONT OF ENCLOSURE, BOTH WITH SUB-BASE OF 4". BASE MUST BE LEVEL WITH GRADE.
3. FOUR 4" X 4" STEEL PIPES SET 1' IN GROUND FILLED WITH CONCRETE, MOUNTED INSIDE ENCLOSURE. SIDE POLES PLACED 1/2 THE DISTANCE FROM FRONT TO BACK. BACK POLES PLACED 1/3 THE DISTANCE OF 6" FROM THE WALL.
4. 9' WIDTH FOR EACH ADDITIONAL CONTAINER. ADD 2 ADDITIONAL PIPES AT REAR OF ENCLOSURE FOR EACH ADDITIONAL CONTAINER.
5. GATES TO BE MOUNTED ON SEPARATE POST NOT CONNECTED TO WALL.
6. GATES TO BE SOLID AND PAINTED TO MATCH ENCLOSURE, CUSTOM DESIGNS WILL BE APPROVED ON A CASE-BY-CASE BASIS.
7. CMU BLOCK MAY BE ANY STD SIZE, 8" MIN WIDTH W/ SMOOTH, SPLIT, SCORED OR FLUTED EXTERIOR FACE OR SPECIALTY BLOCK. TOP TO BE SOLID BLOCK, CAPPED OR ALL CORES FILLED. WALL TO BE FINISHED AND PAINTED TO MATCH BUILDING.

#4 RE-BAR AT FOUR CORNERS AND AT 48" MAX SPACING ALONG WALL WITH FULLY GROUTED CELLS



FRONT SECTION A

SIDE SECTION B



FOOTING DETAIL

DETAIL NO.

C-113

NTS



CITY OF CHANDLER
STANDARD DETAIL

TRASH RECEPTACLE ENCLOSURE

APPROVED:

[Signature]

CITY ENGINEER

DATE:

01-28-2021

DETAIL NO.

C-113

NTS